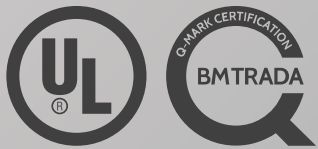




# FIRE RATED GLAZED DOOR



## WIDE RANGE OF CERTIFIED FIRE-RATED PRODUCTS:

- Stainless Steel Door
- Blast Resistant Door
- Rolling Shutter
- Fully Glazed Door
- Wood Finished Steel Door
- Acoustic Door
- Hospital Door
- Ironmongeries



over  
**500**  
Engineers



over  
**10,000**  
Employees



over  
**5,000,000** ft<sup>2</sup>  
Manufacturing Facilities



Serving over  
**100**  
Countries

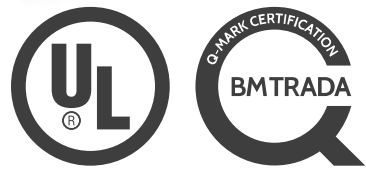


Over **900** Internationally  
Certified  
Products





**fireframes**  
DESIGNER SERIES



## GLAZED DOOR

The NAFFCO Designer Series doors and frames incorporate precise European engineering to provide a sleek, modern alternative to traditional steel hollow metal frames. The Designer Series system possesses narrow / wide stile or hollow metal wide stile steel profiles, thereby exceeding traditional fire-rated frame systems in aesthetics and performance. Available, with fire ratings from 20 to 240 minutes, this system can incorporate a wide range of fire-rated glazing materials with glass sizes that surpass traditional systems.

### AREAS OF APPLICATION

- Schools and Libraries
- Hospitals
- Shopping Malls
- Government Buildings
- Office Entrances and Corporate Locations
- Airports
- Metros and Rail Terminals

### KEY FEATURES

- Fabricated and Assembled in UAE
- Full Vision Fire Doors
- Available in Narrow / Wide Steel Profiles and Hollow Metal Wide Stile Construction
- Modular system that can incorporate up to 240\* Minutes Fire Integrity
- Powder Coated at factory to match desired color scheme
- Optionally, Brushed Stainless Steel finish available
- Tested to UBC 7-2, UBC 7-4, ANSI/UL 9, 10B, 10C [Positive Pressure Test Standard] (or) BS 476 Part 22 Standard
- Oversize options available
- Multiple Glazing Options [Firelite, Firelite NT, Firelite Plus and Pyrostop], Contraflam
- Easy Installation similar to typical storefront systems
- Frames supplied Welded or Knock-Down, ready for Installation
- Hardware available to fit functional requirements (Please check with NAFFCO for compatibility)

### LISTINGS

Classified and labeled by Underwriters Laboratories Inc.® and Underwriters Laboratories of Canada. File number for labeled 20/45/60/90 minute fire-rated frame assemblies is R39060. Frame tests performed in accordance with UL 9 and NFPA 257. Door tests performed in accordance with UL 10B, UL 10C, NFPA 80 and NFPA 252.

FRAMING		
RATING	MAX. EXPOSED GLASS AREA PER PIECE	MAX. EXPOSED GLASS DIMENSION
20 min.	6,272 in <sup>2</sup> (4.05 m <sup>2</sup> )	106-1/2 in (2.71 m)
45 min.	4,500 in <sup>2</sup> (2.90 m <sup>2</sup> )	95-1/4 in (2.42 m)
60 min.	5,616 in <sup>2</sup> (3.62 m <sup>2</sup> )	96 in (2.44 m)
90 min.	2,627 in <sup>2</sup> (1.69 m <sup>2</sup> )	56-1/2 in (1.44 m)

**Note:** ALL DOOR HARDWARE FOR DESIGNER SERIES DOORS WILL BE SUPPLIED BY NAFFCO.

### STANDARD HARDWARE MAY INCLUDE:

- Hinges
- Surface mounted closers
- Single mortise lock
- Panic hardware
- Handle
- Bottom Seal

DOORS		
RATING	MAX. SINGLE DOOR LEAF SIZE	MAX. EXPOSED GLASS SIZE PER PIECE
20 min.	42 X 96 in (1.07 m X 2.43m)	36 x 89 in (.91 m x 2.26 m)
45 min.	42 X 96 in (1.07 m X 2.43m)	36 x 89 in (.91 m x 2.26 m)
60 min.	42 X 96 in (1.07 m X 2.43m)	36 x 89 in (.91 m x 2.26 m)
90 min.	43 x 95-7/8 in (1.09m x 2.44m)	36 x 56-1/2 (divided lite door) in (.91 m x 1.44 m)

### Size Selection Chart for assemblies tested to BS 476 Standards

Description	Fire Integrity in Minutes	Max. Width in mm	Max. Height in mm	Max. Area in sqm
Single Acting Swinging Doors				
Max. Door Leaf Size	180	1159	2304	-
Max. DLO Glass	180	871	2064	-
Max. Door Leaf Size	240	1008	2208	-
Max. DLO Glass	240	720	1968	-

**Note:** 'DLO' in the above table refers to Day Light Opening; The above mentioned DLO are indicative and is subject to glazing type.







FIRE-RATED DOORS & FRAMES FOR 45/60/120 MINUTE APPLICATIONS

NAFFCO Fireframes Aluminum Series combined with Fireglass™ fire-rated glass, provide a barrier to radiant and conductive heat transfer, allowing for unlimited areas of glazing in fire separations. The high strength steel sub-frame is only 2" (51 mm) wide, yet has the strength for tall spans, while the aluminum cover system gives the ultimate in durability and flexibility with many anodizing and coating options available.

FEATURES

- Fire ratings of 45/60/120 minutes
- System features extruded aluminum framing with crisp edges and narrow sightlines
- Custom aluminum face caps available to meet project needsGlass ceramic
- Easy installation
- Frames supplied "K-D" (knock-down)
- Incorporates large individual panes of Fireglass.
- Compatible with Fireframes Designer Series or Fireframes Heat Barrier Series full-glass doors from NAFFCO.
- Standard finish is clear anodized. Powder coating and other anodized finishes are available
- Door hardware available to fit functional requirements. Check with NAFFCO for compatibility
- Designed for interior use. For exterior applications, please see Fireframes Curtainwall Series
- Passes wall assembly test standard UL 263 / ASTM E119 for 60 and 120 minute ratings

LISTINGS

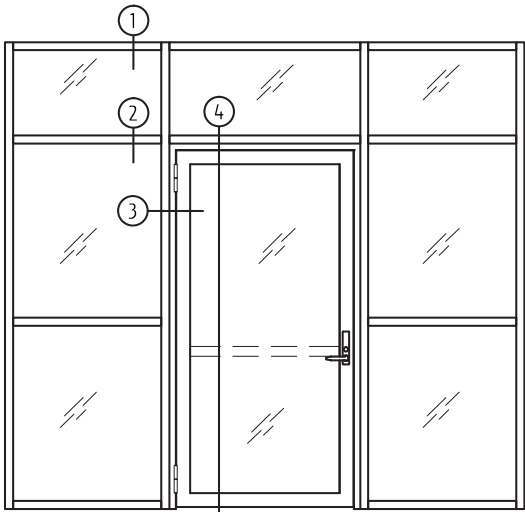
Classified and labeled by Underwriters Laboratories, Inc.® Underwriters Laboratories of Canada. Frame tests performed in accordance with UL 263 / ASTM E-119 (60-120 minutes), CAN/ULC-S101, NFPA 251, UL 9, UL 10C. Fireframes Designer Series and Fireframes Heat Barrier Series doors tested in accordance UL 10B, UL 10C, and NFPA 252.

FRAMING		
RATING	MAX. EXPOSED GLASS AREA PER PIECE	MAX. EXPOSED GLASS DIMENSION
45 min.	4,500 in² (2.90 m²)	95-1/4 in (2.42 m)
60 min.	5,616 in² (3.62 m²)	96 in (2.44 m)
90 min.	2,627 in² (1.69 m²)	56-1/2 in (1.44 m)

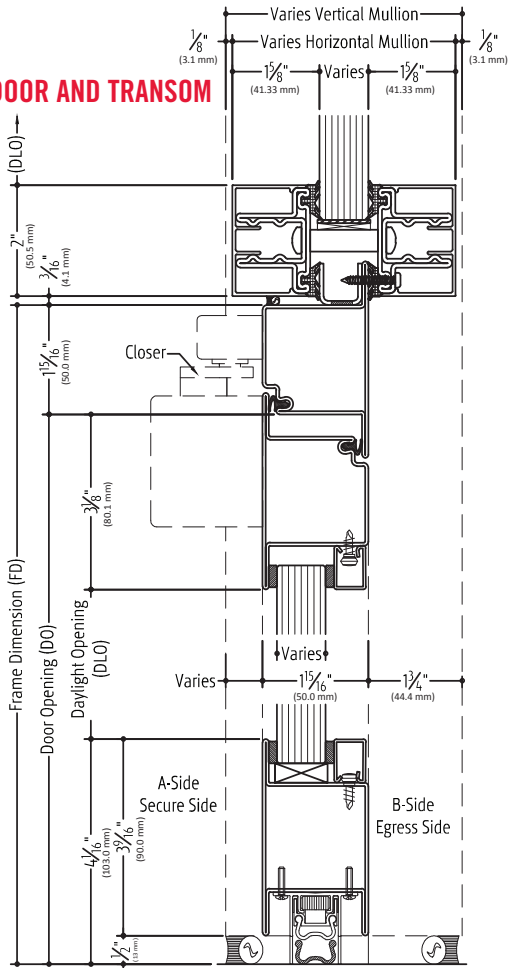
DOORS		
RATING	MAX. SINGLE DOOR LEAF SIZE	MAX. EXPOSED GLASS SIZE PER PIECE
Fireframes Designer Series		
20 min.	42" X 96" (1.07 m X 2.44m)	36" x 89" (.91 m x 2.26 m)
45 min.	42" X 96" (1.07 m X 2.44m)	36" x 89" (.91 m x 2.26 m)
60 min.	42" X 96" (1.07 m X 2.44m)	36" x 89" (.91 m x 2.26 m)
90 min.	43" x 95" - 7/8" (1.09m x 2.44m)	36" x 56" - 1/2" (divided lite door) (.91 m x 1.44 m)
Fireframes Heat Barrier Series***		
60 min.	48 - 7/8" x 95 - 15/16" (1.24 m x 2.44 m)	41 - 5/8" x 89 - 3/4" (1.06 m x 2.28 m)
90 min.	48 - 7/8" x 95 - 15/16" (1.24 m x 2.44 m)	41 - 5/8" x 89 - 3/4" (1.06 m x 2.28 m)

\*\*\* Where temperature rise door is required.

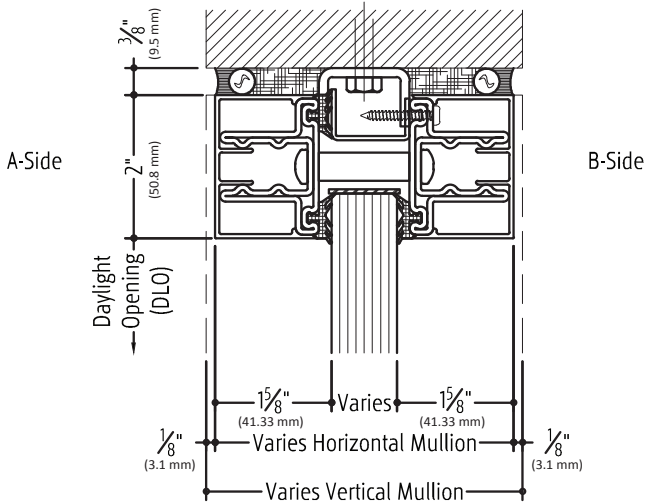
ELEVATION VIEW



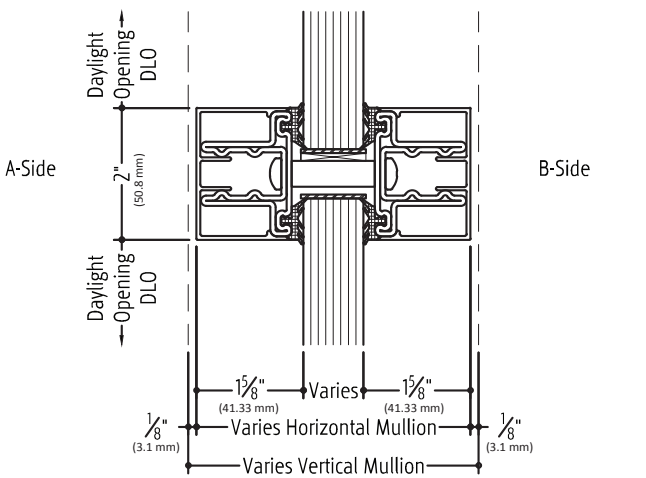
4 DOOR AND TRANSOM



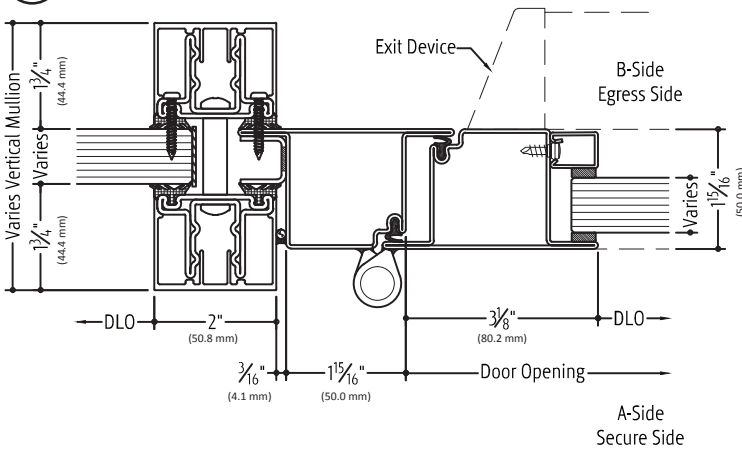
1 HEAD MULLION SECTION



2 HORIZONTAL MULLION SECTION



3 DOOR AND SIDELITE



Details shown use Fireframes Designer Series Doors by NAFFCO. For temperature rise doors, please consider Fireframes Heat Barrier Series doors from NAFFCO.





FIRE-RATED DOORS & FRAMES FOR 60/90/120 MINUTE APPLICATIONS

NAFFCO Fireframes Heat Barrier Series doors and frames provide a barrier to radiant and conductive heat transfer. Incorporating precise European engineering, the system also allows full-lite fire doors for aesthetic or security reasons. Fabricated in the UAE, Heat Barrier Series doors (with ratings up to 90 minutes) and frames (with ratings up to 2 hours) are classified and labeled with UL and ULC.

FEATURES

- Narrow steel profiles
- Doors available in single leaf or double leaf design
- Modular system that can incorporate 60/90 minute full-lite temperature rise doors
- Can incorporate large individual panes of Fireglass glass
- Passes positive pressure test standards UL 10C
- Frames supplied "K-D" (or welded upon request)
- Unrestricted glazing area for use in locations where total glazing exceeds 25% of wall area
- Durable steel frames ensure low maintenance system
- Hardware available to fit functional requirements.
- Finish painted at the factory to match desired color scheme
- Easy installation similar to typical storefront systems
- Brushed stainless steel finish available (doors only)

LISTINGS

Classified and labeled by Underwriters Laboratories, Inc.® Underwriters Laboratories of Canada. Frame tests performed in accordance with UL 263 / ASTM E-119 (60-120 minutes), CAN/ULC-S101, NFPA 251, UL 9, UL 10C. Fireframes Designer Series and Fireframes Heat Barrier Series doors tested in accordance UL 10B, UL 10C, and NFPA 252.

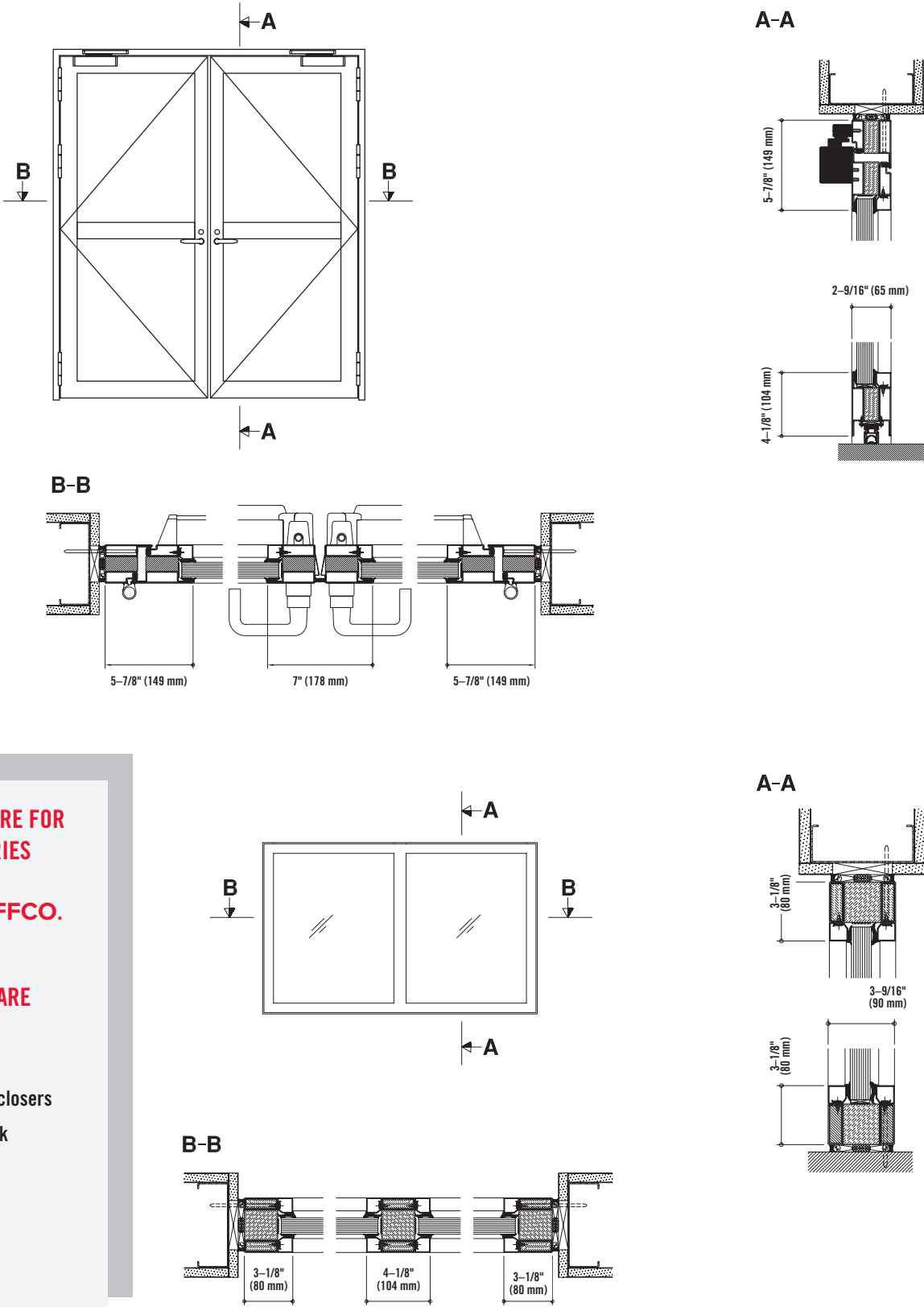
FRAMING		
RATING	MAX. EXPOSED GLASS AREA PER PIECE	MAX. EXPOSED GLASS DIMENSION
45 min.	7,442 in <sup>2</sup> (4.80 m <sup>2</sup> )	118-1/8 in (3.00 m)
60 min.	3,724 in <sup>2</sup> (2.40 m <sup>2</sup> )	96 in (2.44 m)
90 min.	3,730 in <sup>2</sup> (2.41 m <sup>2</sup> )	111 in (2.81 m)

DOORS		
RATING	MAX. SINGLE DOOR LEAF SIZE	MAX. EXPOSED GLASS SIZE PER PIECE
60 min.	42" X 96" (1.07 m X 2.44m)	36" x 89" (.91 m x 2.26 m)
90 min.	43" x 95" - 7/8" (1.09m x 2.44m)	36" x 56" - 1/2" (divided lite door) (.91 m x 1.44 m)

Note: Individual lite sizes cannot exceed "Max. Exposed Glass Area" shown above.



DOOR DETAILS



ALL DOOR HARDWARE FOR  
HEAT BARRIER SERIES  
DOORS WILL BE  
SUPPLIED BY NAFFCO.

STANDARD HARDWARE  
MAY INCLUDE:

- Hinges
- Surface mounted closers
- Single mortise lock
- Panic hardware
- Handle
- Bottom Seals





FIRE-RATED STEEL CURTAINWALL FOR 45/60/120 MINUTE APPLICATIONS

NAFFCO Fireframes are revolutionizing fire-rated framing. Incorporating precise European engineering, the Curtainwall Series allows for large, multi-story expanses of glass in interior and exterior applications. Fireframes Curtainwall Series frames are classified and labeled with UL and ULC.

FEATURES

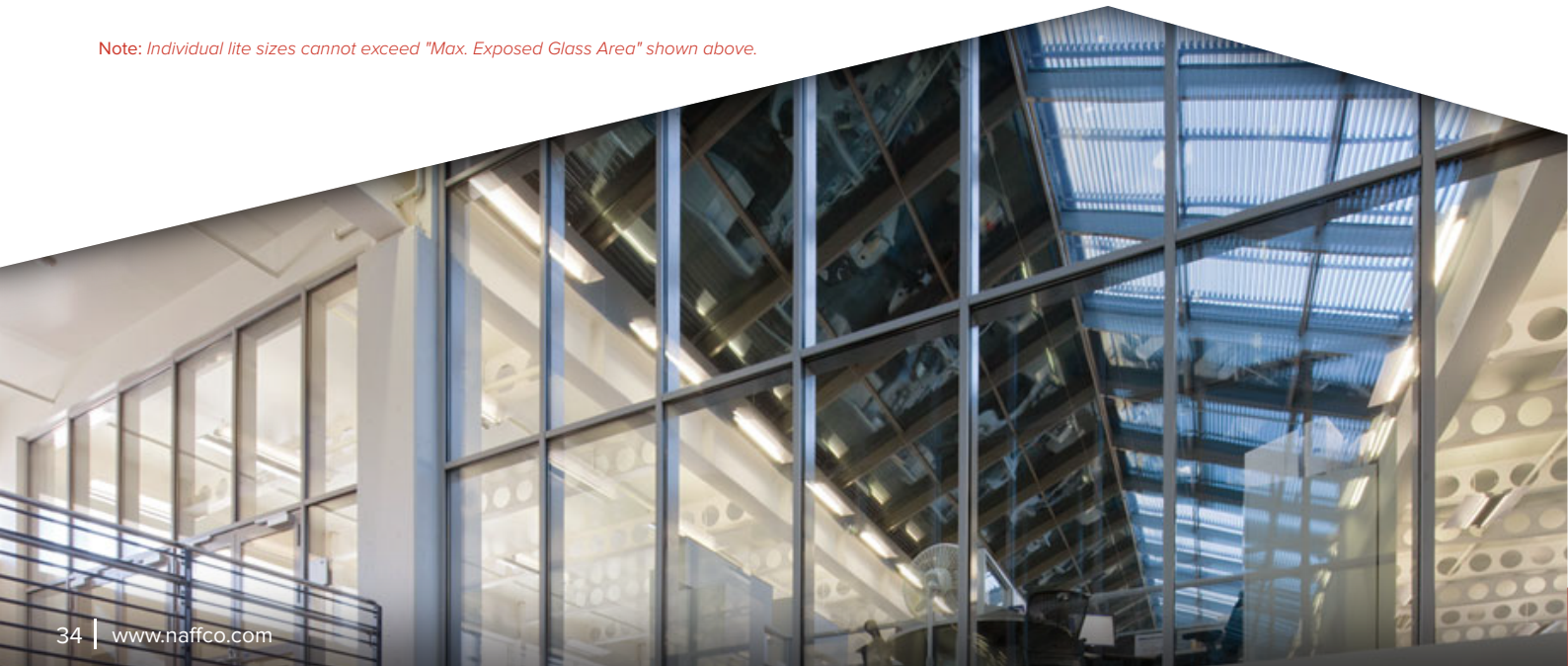
- Fire ratings of 45, 60 and 120 minutes
- Unrestricted glazing area for use in locations where total glazing exceeds 25% of wall area (60 and 120 minutes)
- Full-lite doors available in single leaf or double leaf design (see Fireframes Designer Series or Fireframes Heat Barrier Series)
- Narrow steel and stainless steel profiles
- Air and water pressure tested and approved for exterior use
- Easy installation similar to typical pressure plate curtainwall
- Frames supplied "K.D." or welded depending on application
- Can incorporate large individual panes of Fireglass
- Durable steel and stainless steel frames ensure low maintenance system
- Finished face caps (aluminum, stainless steel, etc.) to meet project needs
- Custom aluminum face caps to meet project needs
- Finish painted at the factory to match desired color scheme
- Select profiles are available in 304 stainless steel with #4 brush finish

LISTINGS

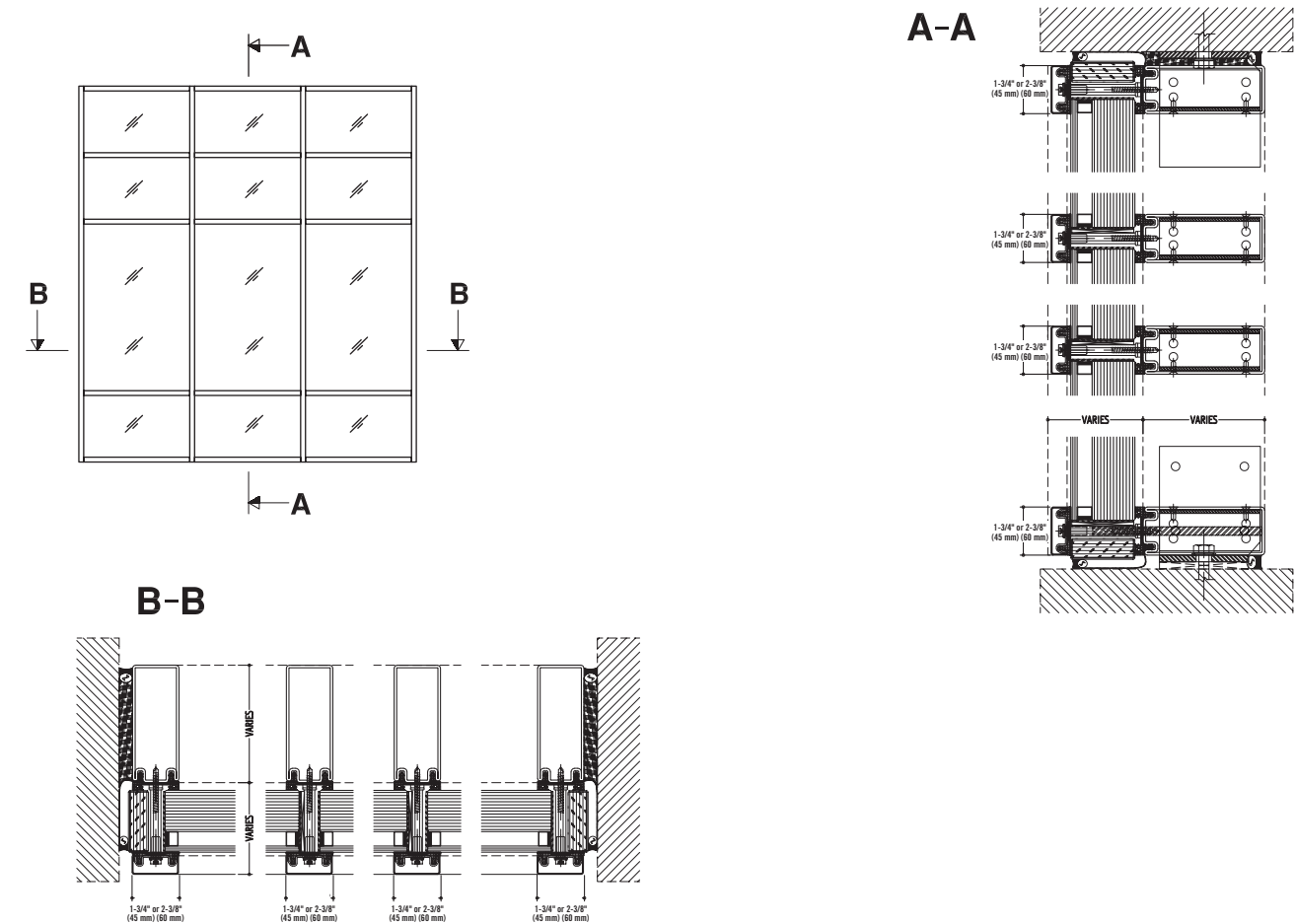
Classified and labeled by Underwriters Laboratories Inc. and Underwriters Laboratories of Canada.
Frame tests performed in accordance with ASTM E-119 (60-120 minutes), CAN/ULC-S101, NFPA 251, UL 263, UL 9, UL 10C, ASTM E283, ASTM E330, ASTM E331, and AAMA 501.1.

Table with 3 columns: RATING, MAX. EXPOSED GLASS AREA PER PIECE, MAX. EXPOSED GLASS DIMENSION. Rows for 45 min., 60 min., and 120 min. ratings.

Note: Individual lite sizes cannot exceed "Max. Exposed Glass Area" shown above.

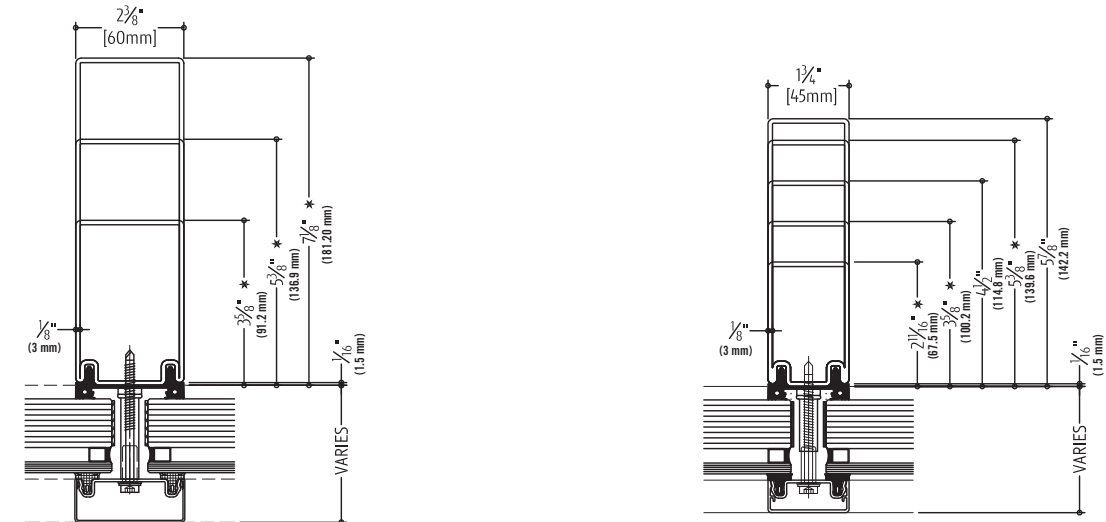


DETAIL DRAWINGS



AVAILABLE MULLION PROFILES

Available in 304 stainless steel with #4 brush finish







## FIRE-RATED, SAFETY-RATED GLASS FLOORING SYSTEMS

This advanced glass floor system is impact-resistant and fire-rated for two hours. Fireframes ClearFloor can be used as a durable, non-slip walking surface, and is approved for loads up to 150 psf. The system is available for interior applications.

### FEATURES

- Fire-rated for up to two hours
- Allows glazing in spaces that previously would have required alternative opaque fire-stopping materials like concrete and corrugated steel
- Consists of two-hour fire-rated Fireglass; a tempered, laminated walking surface glass; and a steel framing grid
- Brings daylight deep into building interiors, creating dramatic visual effects between different building levels
- Individual glass panel sizes are approximately 48" x 50" (1.21 m x 1.27 m)
- Protection against radiant and conductive heat transfer
- Barrier to fire and smoke
- Durable, non-slip walking surface
- Modular system enables design creativity
- Replacement of individual walking surface panels in case of impact breakage
- Allows for decorative color frits and sandblasted glass without affecting fire rating
- For use in interior applications

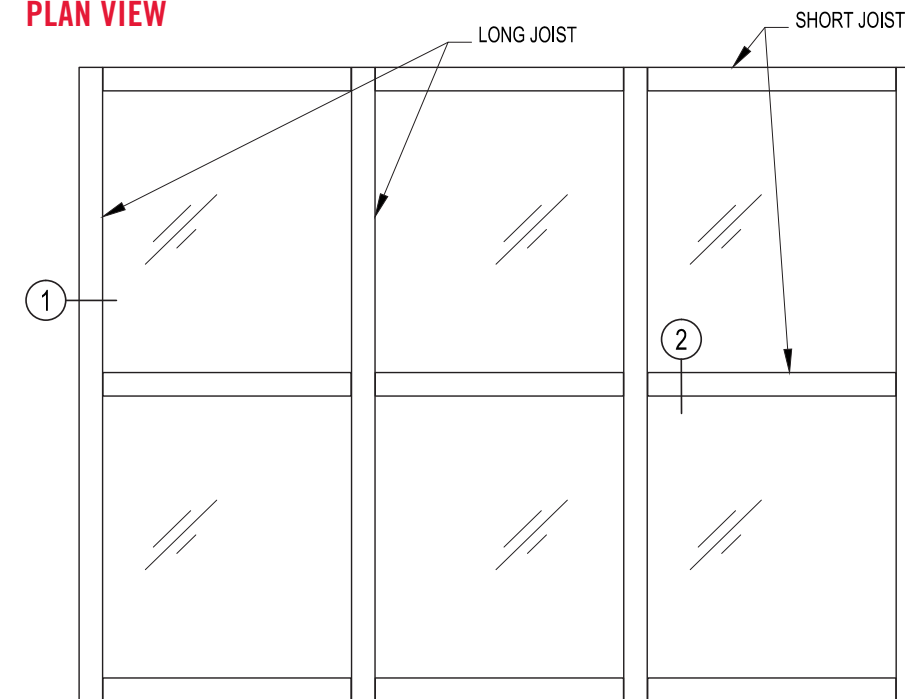
### LISTINGS

Classified and labeled with Underwriters Laboratories, Inc.®. Tests performed in accordance with ASTM E-119, CAN/ULC-S101, UL 263 and NFPA 251.

### STORAGE & HANDLING

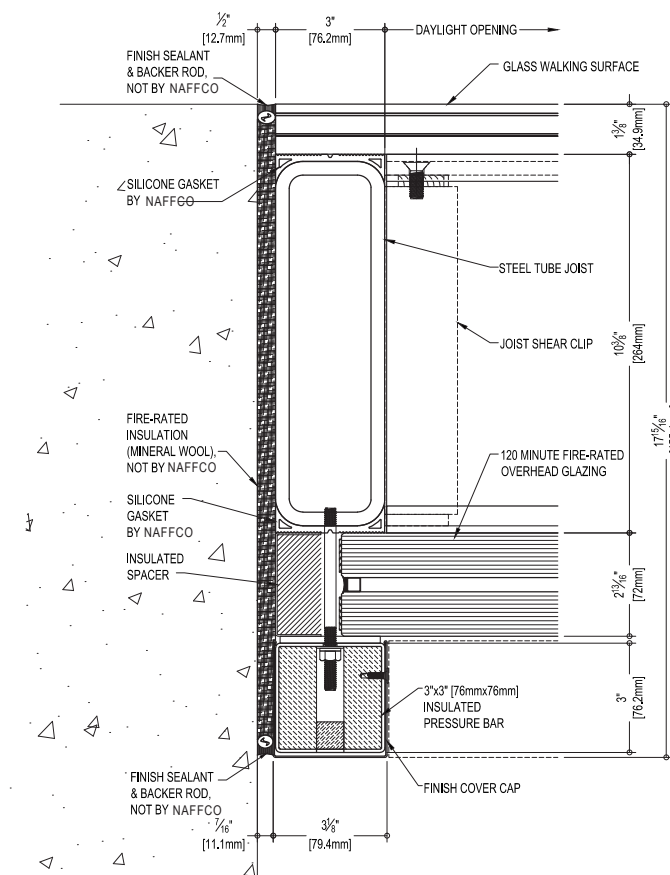
Fireglass must be handled with care during transportation, storage, inspection and installation. It should be stored in dry conditions, stocked vertically and fully supported in a manner which prevents the glass from sagging. During storage and transportation, the temperature of Fireglass should not exceed 122°F (50°C). Do not expose the "non-PVB" side of the glass to UV light. Do not remove the protective edge tape.

## PLAN VIEW

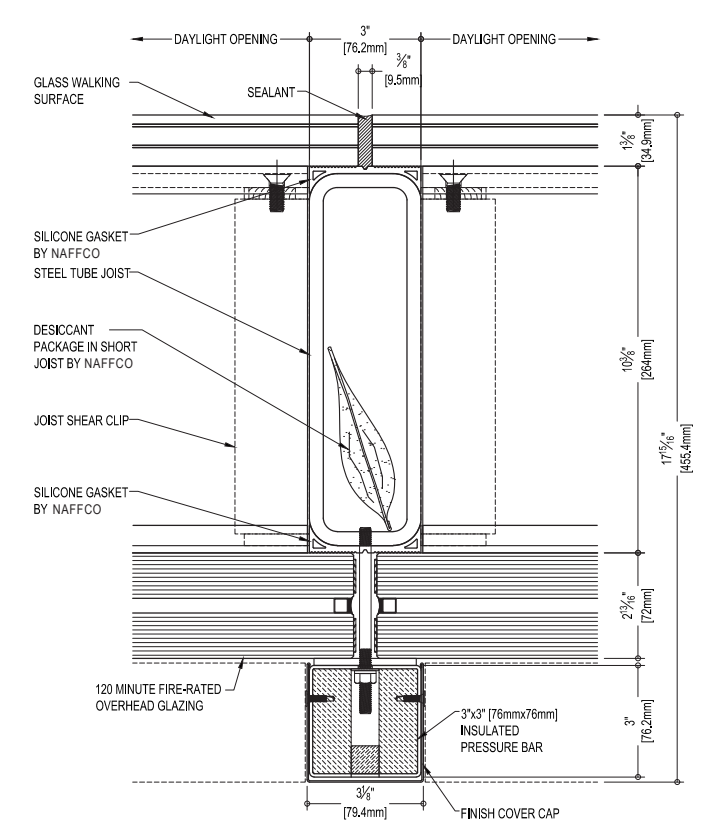


MAXIMUM INDIVIDUAL GLASS PANEL SIZE APPROXIMATELY 48" X 50" (1.21m x 1.27m)

## 1 CROSS SECTION AT EDGE CONDITION



## 2 SHORT JOIST CROSS SECTION





# FireLite

## FIRE-RATED GLASS CERAMIC

NAFFCO FireLite is a 5 mm thick fire-rated glazing material. It is listed for use in non-impact safety-rated locations such as transoms and borrowed lites with fire rating requirements ranging from 20 to 90 minutes. Trusted for nearly 30 years, the FireLite family of products features ultraHD Technology for superior color and surface quality.

## FEATURES

- ultraHD Technology for Improved surface quality, clarity and color
- Fire-rated for up to 90 minutes **with required hose stream test**
- Glass ceramic
- Clear and wireless
- Fits in Fireframes Designer Series frames from NAFFCO, or standard fire-rated frames
- May be lightly sandblasted or etched on one side without affecting fire rating
- Passes positive pressure test standard UL 10C

**Note:** This product is not a barrier to radiant heat, as it does not meet test standards ASTM E-119 or UL 263. If your jurisdiction requires a “barrier to heat” product, please contact NAFFCO regarding Fireglass.

## LISTINGS

Classified and labeled by Underwriters Laboratories, Inc.® and Underwriters Laboratories of Canada. File number for labeled fire-rated assemblies is R38488. All above tests performed in accordance with UL 9, UL 10C, CSFM 43.7, NFPA 80, NFPA 257, and CAN4 S-104. FireLite products have been tested to BS 476-20 up to 4 hours for 1.21 m x 2.43 m and .91 m x 2.43 m dimensions.

RATING	ASSEMBLY	MAX. EXPOSED AREA	MAX WIDTH OF EXPOSED GLAZIN	OR	MAX. HEIGHT OF EXPOSED GLAZING
20 to 60 min.	OTHER THAN DOORS	2.15 m <sup>2</sup>	2,413 mm		2,413 mm
90 min	OTHER THAN DOORS	1.69 m <sup>2</sup>	1,435 mm		1,435 mm

Check with frame manufacturer for maximum tested glass sizes and required stop height.  
**Note:** Individual lite sizes cannot exceed “Max. Exposed Area” shown above.

## GENERAL CHARACTERISTICS

THICKNESS:	5 mm overall
WEIGHT:	2.5 kg/m <sup>2</sup>
APPROX. VISIBLE TRANSMISSION:	88%
APPROX. VISIBLE REFLECTION:	9%
HARDNESS (VICKER’S SCALE):	700
FIRE RATING:	20 minutes to 90 minutes
IMPACT SAFETY RATING:	None
STC RATING:	35

## LABELING

Each piece of Firelite shall be permanently labeled with the Firelite logo, UL logo and fire rating.



# FireLite<sup>NT</sup>



## FIRE-RATED, SAFETY-RATED GLASS CERAMIC MADE WITH SURFACE APPLIED FILM

NAFFCO FireLite NT is a 5 mm thick fire-rated and impact safety-rated glazing material, composed of FireLite and surface-applied firerated film. It is listed for use in doors, sidelites, transoms and borrowed lites with fire rating requirements ranging from 20 minutes to 3 hours. Trusted for over 20 years, the FireLite family of products now feature ultraHD Technology for superior color and surface quality.

## FEATURES

- ultraHD Technology for improved surface quality, clarity and color
- Fire-rated for up to 3 hours **with required hose stream test**
- Impact safety-rated—meets ANSI Z97.1 and CPSC 16 CFR1201 (Cat. I and II)
- Glass ceramic with high performance surface-applied approved fire-rated film
- Clear and wireless
- Fits in Fireframes® Designer Series frames from NAFFCO, or standard fire-rated frames
- Withstands thermal shock
- Protects from fire and safety on both sides of glass
- FireLite side may be lightly sandblasted or etched without affecting the fire rating
- Passes positive pressure test standards UL 10C

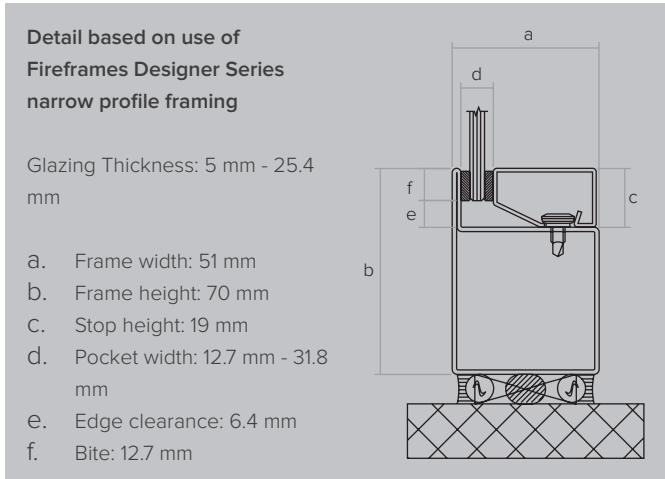
**Note:** This product is not a barrier to radiant heat, as it does not meet test standards ASTM E-119 or UL 263. If your jurisdiction requires a “barrier to heat” product, please contact NAFFCO regarding Fireglass.

## LISTINGS

Classified and labeled by Underwriters Laboratories, Inc.® and Underwriters Laboratories of Canada. File number for labeled fire-rated assemblies is R38488. All above tests performed in accordance with UL 9, UL 10B, UL 10C, CSFM 43.7, NFPA 80, NFPA 252, NFPA 257, CAN4 S-104 AND CAN4 S-106. FireLite products have been tested to BS 476-20 up to 4 hours for 1.21 m x 2.43 m and .91 m x 2.43 m dimensions.

## GENERAL CHARACTERISTICS

THICKNESS:	5 mm overall
WEIGHT:	12.5 kg/m <sup>2</sup>
APPROX. VISIBLE TRANSMISSION:	88%
APPROX. VISIBLE REFLECTION:	9%
HARDNESS (VICKER’S SCALE):	700
FIRE RATING:	20 minutes to 3 hours
IMPACT SAFETY RATING:	Meets ANSI Z97.1 and CPSC 16CFR1201 (Cat. I and II)
STC RATING:	35





# FireLitePLUS

RATING	ASSEMBLY	MAX. EXPOSED AREA	MAX WIDTH OF EXPOSED GLAZIN	OR MAX. HEIGHT OF EXPOSED GLAZING
20 to 60 min.	DOORS (non-temp rise)	2.15 m <sup>2</sup>	914 mm	2,260 mm
	DOORS (temp rise)	.06 m <sup>2</sup>	304 mm	838 mm
	OTHER THAN DOORS	2.15 m <sup>2</sup>	2,413 mm	2,413 mm
90 min	DOORS (non-temp rise)	1.31 m <sup>2</sup>	914 mm	1,435 mm
	DOORS (temp rise)	.06 m <sup>2</sup>	304 mm	838 mm
	OTHER THAN DOORS	1.69 m <sup>2</sup>	1,435 mm	1,435 mm
3 hour	DOORS	.06 m <sup>2</sup>	304 mm	838 mm

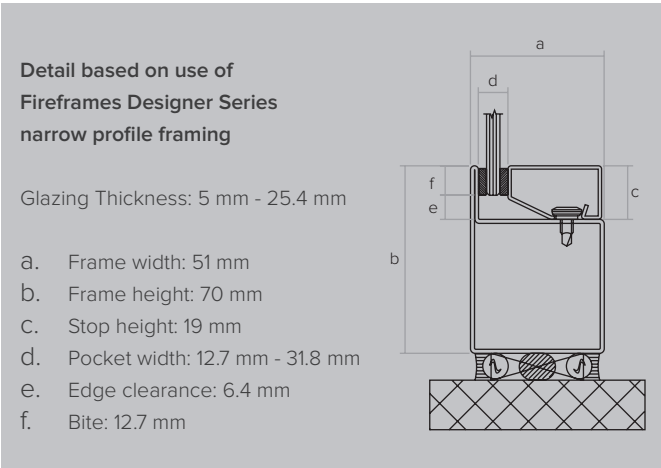
Check with frame manufacturer for maximum tested glass sizes and required stop height.  
*Note: Individual lite sizes cannot exceed "Max. Exposed Area" shown above.*

### MAX. SHEET SIZE

1.21 m X 2.43 m  
.91 m x 2.43 m (Obscure)

### LABELING

Each piece of Firelite NT shall be permanently labeled with the Firelite NT logo, UL logo and fire rating.



### FIRE-RATED, SAFETY-RATED GLASS CERAMIC

NAFFCO FireLite Plus is a nominal 8 mm thick laminated fire-rated and impact safety-rated glazing material. It is listed for use in doors, sidelites, transoms and borrowed lites with fire rating requirements ranging from 20 minutes to 3 hours. Trusted for nearly 30 years, the FireLite family of products features ultraHD® Technology for superior color and surface quality.

### FEATURES

- ultraHD Technology for improved surface quality, clarity and color
- Fire-rated for up to 3 hours *with required hose stream test*
- Impact safety-rated—meets ANSI Z97.1 and CPSC 16 CFR1201 (Cat. I and II)
- Glass ceramic
- Clear and wireless
- Fits in Fireframes Designer Series frames from NAFFCO, or standard fire-rated frames
- Withstands thermal shock
- Protects from fire and safety on both sides of glass
- May be lightly sandblasted/etched on one side without affecting fire rating
- FireLite side may be lightly sandblasted or etched without affecting the fire rating
- Passes positive pressure test standards UL 10C

*Note: This product is not a barrier to radiant heat, as it does not meet test standards ASTM E-119 or UL 263. If your jurisdiction requires a "barrier to heat" product, please contact NAFFCO regarding Fireglass.*

### LISTINGS

Classified and labeled by Underwriters Laboratories, Inc.® and Underwriters Laboratories of Canada. File number for labeled fire-rated assemblies is R38488. All above tests have been performed in accordance with UL 9, UL 10B, UL 10C, CSFM 43.7, NFPA 80, NFPA 252, NFPA 257, CAN4 S-104, and CAN4 S-106. FireLite products have been tested to BS 476-20 up to 4 hours for 1.21 m x 2.43 m and .91 m x 2.43 m dimensions.

### GENERAL CHARACTERISTICS

THICKNESS:	Nominal 8 mm overall
WEIGHT:	19.53 kg / m <sup>2</sup>
APPROX. VISIBLE TRANSMISSION:	85%
APPROX. VISIBLE REFLECTION:	9%
HARDNESS (VICKER'S SCALE):	700
FIRE RATING:	20 minutes to 3 hours
IMPACT SAFETY RATING:	Meets ANSI Z97.1 and CPSC 16CFR1201 (Cat. I and II)
STC RATING:	38





RATING	ASSEMBLY	MAX. EXPOSED AREA	MAX WIDTH OF EXPOSED GLAZING	OR	MAX. HEIGHT OF EXPOSED GLAZING
20 to 60 min.	DOORS (non-temp rise)	2.07 m <sup>2</sup>	914 mm	OR	2,260 mm
	DOORS (temp rise)	.06 m <sup>2</sup>	304 mm		838 mm
	OTHER THAN DOORS	2.15 m <sup>2</sup>	2,413 mm		2,413 mm
90 min	DOORS (non-temp rise)	1.31 m <sup>2</sup>	914 mm	OR	1,435 mm
	DOORS (temp rise)	.06 m <sup>2</sup>	304 mm		838 mm
	OTHER THAN DOORS	1.69 m <sup>2</sup>	1,435 mm		1,435 mm
3 hour	DOORS	.06 m <sup>2</sup>	304 mm	OR	838 mm

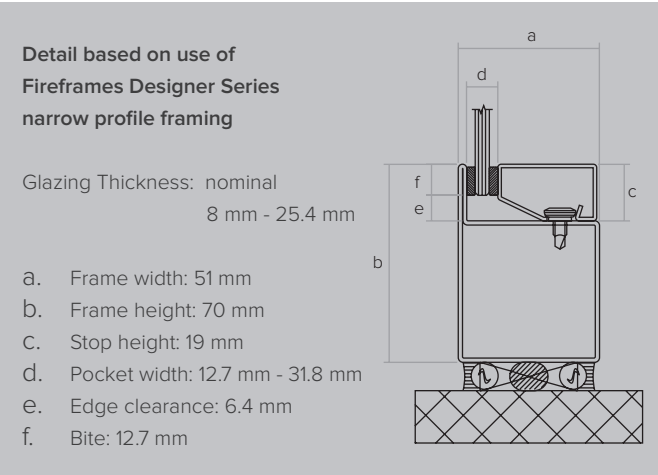
Check with frame manufacturer for maximum tested glass sizes and required stop height.  
Note: Individual lite sizes cannot exceed "Max. Exposed Area" shown above.

MAX. SHEET SIZE

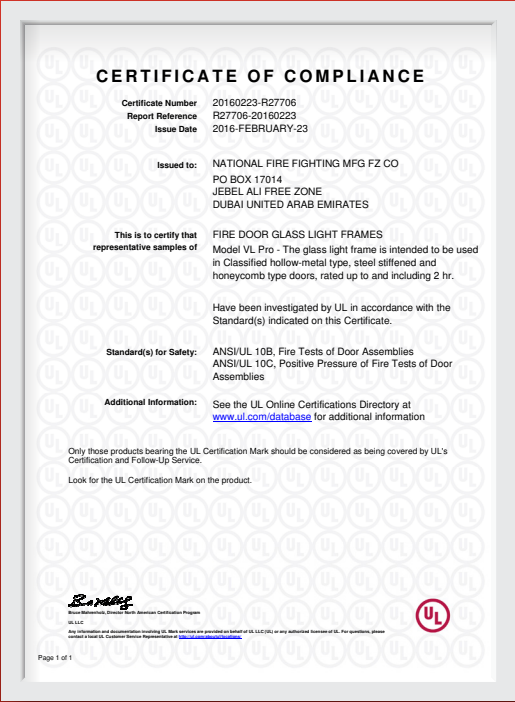
1.21 m X 2.43 m

LABELING

Each piece of FireLite Plus shall be permanently labeled with the FireLite Plus logo, UL logo and fire rating.



CERTIFICATES



# CERTIFICATES

**CERTIFICATE OF COMPLIANCE**

Certificate Number: 20170629-R38602  
Report Reference: R38602-20170628  
Issue Date: 2017-June-29

Issued to: NATIONAL FIRE FIGHTING MFG FZ CO  
PO BOX 17014  
JEBEL ALI FREE ZONE  
DUBAI UNITED ARAB EMIRATES

This is to certify that representative samples of ACCESS-TYPE FIRE DOORS  
See next page for models

Have been investigated by UL in accordance with the Standard(s) indicated on this Certificate.

Standard(s) for Safety: ANSI/UL 10B Fire Tests of Door Assemblies  
Additional Information: See the UL Online Certifications Directory at [www.ul.com/database](http://www.ul.com/database) for additional information

Only those products bearing the UL Certification Mark should be considered as being covered by UL's Certification and Follow-Up Service.  
Look for the UL Certification Mark on the product.

Page 1 of 2

**CERTIFICATE OF COMPLIANCE**

Certificate Number: 20160720-R25075  
Report Reference: R25075-20121231  
Issue Date: 2016-JULY-20

Issued to: NATIONAL FIRE FIGHTING MFG FZ CO  
PO BOX 17014  
JEBEL ALI FREE ZONE  
DUBAI UNITED ARAB EMIRATES

This is to certify that representative samples of SWINGING-TYPE FIRE DOORS;  
SWINGING-TYPE FIRE DOORS, POSITIVE-PRESSURE TESTED  
Model FALCON, a single and a pair of Swinging-type fire door assembly of the hollow metal type with Rockwood insulation, intended for 2h (where applicable), 1-1/2h, 1h and 3/4h locations for use in masonry constructions, Doors Classified in accordance with ANSI/UL 10C.

Have been investigated by UL in accordance with the Standard(s) indicated on this Certificate.

Standard(s) for Safety: ANSI/UL 10C, Positive Pressure Fire Tests of Door Assemblies  
Additional Information: See the UL Online Certifications Directory at [www.ul.com/database](http://www.ul.com/database) for additional information

Only those products bearing the UL Certification Mark should be considered as being covered by UL's Certification and Follow-Up Service.  
Look for the UL Certification Mark on the product.

Page 1 of 1

**CERTIFICATE OF COMPLIANCE**

Certificate Number: 20170307-R39060  
Report Reference: R39060-20170220  
Issue Date: 2017-MARCH-07

Issued to: NATIONAL FIRE FIGHTING MFG FZ CO  
PO BOX 17014  
JEBEL ALI FREE ZONE  
DUBAI UNITED ARAB EMIRATES

This is to certify that representative samples of Special-purpose Fire Doors  
Designer Series

Have been investigated by UL in accordance with the Standard(s) indicated on this Certificate.

Standard(s) for Safety: Fire Tests of Door Assemblies - ANSI/UL 9, UL 10B, UL 10C, CAN4 S-M80  
Additional Information: See the UL Online Certifications Directory at [www.ul.com/database](http://www.ul.com/database) for additional information

Only those products bearing the UL Certification Mark should be considered as being covered by UL's Certification and Follow-Up Service.  
Look for the UL Certification Mark on the product.

Page 1 of 1

**CERTIFICATE OF COMPLIANCE**

Certificate Number: 20160720-R25075  
Report Reference: R25075-20130830  
Issue Date: 2016-JULY-20

Issued to: NATIONAL FIRE FIGHTING MFG FZ CO  
PO BOX 17014  
JEBEL ALI FREE ZONE  
DUBAI UNITED ARAB EMIRATES

This is to certify that representative samples of SWINGING-TYPE FIRE DOORS;  
SWINGING-TYPE FIRE DOORS, POSITIVE-PRESSURE TESTED  
Model EAGLE, a single and a pair of Swinging-type fire door assembly of the hollow metal type with honeycomb construction, intended for 2h (where applicable), 1-1/2h, 1h and 3/4h locations for use in masonry constructions, Doors Classified in accordance with ANSI/UL 10C.

Have been investigated by UL in accordance with the Standard(s) indicated on this Certificate.

Standard(s) for Safety: ANSI/UL 10C, Positive Pressure Fire Tests of Door Assemblies  
Additional Information: See the UL Online Certifications Directory at [www.ul.com/database](http://www.ul.com/database) for additional information

Only those products bearing the UL Certification Mark should be considered as being covered by UL's Certification and Follow-Up Service.  
Look for the UL Certification Mark on the product.

Page 1 of 1

**CERTIFICATE OF REGISTRATION**

This is to certify that

National Fire Fighting Manufacturing FZCO (NAFFCO)  
P.O.Box 17014  
JEBEL ALI FREE ZONE  
DUBAI  
United Arab Emirates

Meets the requirements of the Exova BM TRADA Q-Mark International Fire Door Manufacture scheme to STD 096 - Issue 2 - 09/02/2015 which only operates in Bahrain, Egypt, Iraq, Jordan, Kuwait, Lebanon, Libya, Oman, Qatar, Saudi Arabia and The United Arab Emirates for the products on the attached schedule.

Tom Johnston  
General Manager  
Central Certification Services

Page 1 of 2

**Registration Schedule**

Assessment/ Test Report	Doors Description	Rating	Test Type
TBWM18	NAFFCO - SDD - 180	180 min	BS 476 Part 22
TBWM128	NAFFCO - SDDFG - 240	240 min	BS 476 Part 22
Chim12187 (Chim12187)	NAFFCO - AP - 240	240 min	BS 476 Part 22
TBWM1019-1	NAFFCO-Falcon-180	180 min	BS 476 Part 22
TBWM1019-3	NAFFCO-Falcon & Eagle- 240	240 min	BS 476 Part 22
TBWM1019-2	NAFFCO-Cool TRIR- 400"	120 min	BS 476 Part 22
TBWM1019-4	NAFFCO-Eagle- 120	120 min	BS 476 Part 22
TBWM1019-5	NAFFCO-LSADD-240	240 min	BS 476 Part 22
TBWM1019-6	(With Vision Panels)	120 min	BS 476 Part 22
BMTCNAF14284	NAFFCO-LSADD-180	180 min	BS 476 Part 22
	NAFFCO-LSADD-240	240 min	BS 476 Part 22
	(with / without overpanel)	180 min	
BMTCNAF15251	NAFFCO-LSADD-240	240 min	BS 476 Part 22
	(with / without overpanel)	120 min	
	NAFFCO-LSADD-180	180 min	
	(with / without overpanel)	240 min	
	NAFFCO-LSADD-240	240 min	
	(with / without overpanel)		

Page 2 of 2

**CERTIFICATE OF MEMBERSHIP** 2015-2016

NAFFCO

is a member in good standing and is entitled to the benefits and privileges of membership.

Robert D. Maas  
Robert D. Maas  
DHI President

Gerald S. Hoppes, Sr. CAE  
Gerald S. Hoppes, Sr. CAE  
Chief Executive Officer

DHI  
Door Security + Safety Professionals





Serving Over 100 Countries Worldwide

**NAFFCO**

Email: [info@naffco.com](mailto:info@naffco.com)  
[www.naffco.com](http://www.naffco.com)

In line with NAFFCO policy for continuous product development,  
NAFFCO has the right to change specifications without prior notice.

NF-CA-FRD-U0518B-P0518C-DXB

FOR ANY ASSISTANCE, PLEASE CONTACT

**800-NAFFCO**

8 0 0 6 2 3 3 2 6  
[customerservice@naffco.com](mailto:customerservice@naffco.com)