



Fire Rated Doors



AXIS SAFETY ENGINEERING LTD.



Manufacturing

NAFFCO manufacturing department has the latest technology, state-of-the-art machines (CNC machines, hydraulic shearing and bending machines, all types of welding machines - MIG, TIG, ARC etc.), and a complete machine shop that enable us to meet the needs of any production requirement.

NAFFCO has the ability to introduce the latest technological systems & equipment in the fire safety field. Our engineers and technicians are well qualified & experienced in producing quality products.

The department is equipped with full-fledged testing facilities to test the equipment as per NFPA, EN, ICAO, KKK and Civil Defense standards & requirements, and to meet the customers specifications.

Considering the above facilities and excellence in engineering capabilities, NAFFCO can meet any challenges to produce bulk quantities of fire safety materials.



FIRE RATED DOORS

NAFFCO has a dedicated state-of-the-art manufacturing facility for Fire Rated Doors. With one of the highest production capacities in the industry, NAFFCO is positioned as a leader in the door and hardware market.

NAFFCO's strength is in the reliability it can offer. With one of the highest numbers of sophisticated machinery and expert professionals, NAFFCO ensures compliance to its commitments and client requirements.

Our strict zero tolerance quality program guarantees client satisfaction in each and every delivered unit, making the NAFFCO brand synonymous with quality.

NAFFCO Fire Rated Doors are designed and manufactured in accordance with internationally recognized standards such as:

- NFPA 80
- SDI
- ANSI/UL 10B
- ANSI/UL 10C
- BS 476 Part 22
- CAN/ULC-S104
- NAMM HMMA
- AHJ
- NFPA 252



NAFFCO production line for fire doors are equipped with the most advanced CNC machinery



STEEL DOORS



FIRE RATED DOORS

NAFFCO Steel Doors combine Fire Resistance with Door Functionality without compromising any aspect of both the requirements. These types of Doors reduce the Spread of Fire and enable Safe Egress, in-addition to offering highest degree of Compartmentalization. These types of Doors are highly preferred in all types of Buildings, nowadays, to offer Safe and Secure living and Egress. Our Technical Team is always available to offer advice and planning.

SIZES

Custom Sizes available (Contact our Technical Team to know more about max. available Sizes for Fire Rated Door-sets)

FIRE RATING

Up to 120 Minutes.

VISION PANEL

Optional (Contact our Technical Team to know more about max. available Sizes for Fire Rated Vision Panels)

LOUVERS

Optional (Contact our Technical Team to know more about max. available Sizes for Fire Rated Automatic Louver and the possibility of incorporating them)

HANDING

As per Client's requirement.

HONEY COMB CORE

Kraft honey comb paper cores provides extreme rigidity and one of the highest flatness levels. This bonded to the face sheets with fire rated adhesive.

RECOMENDED USE

- Interior applications
- Residential applications
- Commercial applications
- Labour camps
- Warehouses
- Government buildings

Finishes

- Polyester Powder coated
- Epoxy powder coated
- Wood Finish
- Stainless steel

STEEL STIFFENED CORE

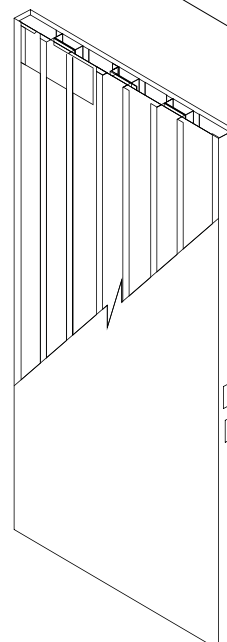
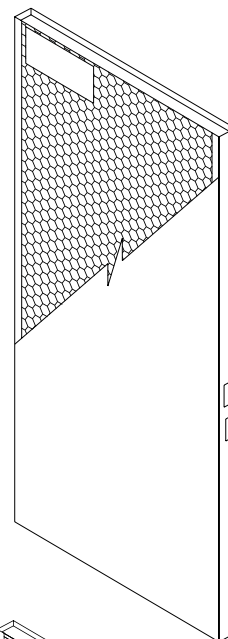
Steel Stiffened Doors provide highest durability, Insulation and Impact Resistance. The Door Leaves consist of Steel Hat Shaped Stiffeners that extend to the full height of the Door and Spot Welded to the Leaf face-sheets. The Void Spaces between the adjacent Stiffeners are filled with Mineral Wool Infill.

RECOMENDED USE

- High Impact Applications
- Frequent Use Applications
- Utility Buildings
- Commercial Towers
- Educational Institutions
- Health Care Buildings

FINISHES

- Polyester Powder coated
- Epoxy powder coated
- Wood Finish



GLAZED DOORS

Glazed Doors are suitable for any application where Aesthetical and Well Lit environment are required in-addition to an environment where Vision of sight is demanded to the other side of a Room.

SIZES

Custom Sizes available (*Contact our Technical Team to know more about max. available Sizes for Fire Rated Door-sets*)

FIRE RATING

Up to 120 Minutes.

HANDING

As per Client's requirement.

APPLICATIONS

- Malls
- Libraries
- Schools
- Government Buildings
- Hospitals
- Corporate Locations

FINISHES

- Polyester Powder Coated
- Epoxy Powder Coated
- Wood Finish
- Stainless Steel



GLAZING OPTIONS

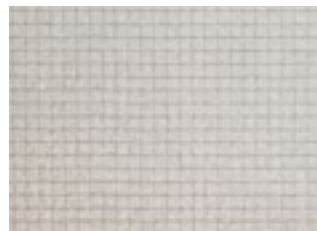
At NAFFCO, we have various available Glazing options. NAFFCO is the only company in the UAE to have a UL Listed vision panel that suit Metal Doors.

SIZES

Contact our Technical Team to know more about maximum available sizes for Fire Rated Vision Panels.

FIRE RATING

Up to 120 Minutes.



GEORGIAN WIRED GLASS



CLEAR GLASS



TEMPERED GLASS

NAFFCO FIRE CERTIFIED HARDWARE

NAFFCO carries a complete range of certified hardware catering to various design requirements. All hardware are available in multiple finish options.

EXIT DEVICE

VERTICAL FIRE/PANIC EXIT DEVICE

- UL Listed
- Top and bottom latching
- Rods are high quality steel
- Rods can be adjusted to fit various door heights and widths.
- Non-handed
- Suited for double leaf doors
- Finishes:
 - Stainless steel
 - Painted Aluminium Finish
- Available Sizes
 - 22" Doors
 - 36" Doors
 - 48" Doors

HORIZONTAL FIRE/PANIC EXIT DEVICE

- UL Listed
- Adjustable to door width requirements
- Non-Handed
- Suitable for single leaf doors
- Finishes:
 - Stainless steel
 - Aluminium finish
- Available Sizes
 - 22" Doors
 - 36" Doors
 - 48" Doors

CONCEALED FIRE/PANIC EXIT DEVICE

- Top and bottom connection
- Adjustable to door width and height
- Non-handed
- Suited for single and double leaf doors.
- Finishes:
 - Stainless steel
 - Painted Aluminium Finish
- Available Sizes
 - 22" Doors
 - 36" Doors
 - 48" Doors



HINGES

RELIABILITY

NAFFCO produces the highest quality of steel hinges meeting the most stringent requirements.

Hinge selection is based on the following factors:

- Door weight
- Usage frequency
- Door Dimension

Ball bearing hinges are mandatory requirements for all fire rated door openings.

NUMBER OF HINGES

As per NFPA Standards Doors up to 1520mm requires two(2) hinges, above which every 760mm mandates 1 hinge.



CLOSER

FEAURES

- UL Listed.
- Adjustable closing speeds
- Adjustable latching speeds
- Adjustable sweep speed.
- Back check function.
- Power/Spring Size Range – 1 to 5
- Handling can be easily adjustable on site feature allows the door to be opened to a specified degree without hitting the wall



LOCKS

- NAFFCO provides both mortise and cylindrical lock sets
- Conforms to the highest quality standards.
- Available in various finishes.
- ANSI, BS and UL Certified options available.

KEYING

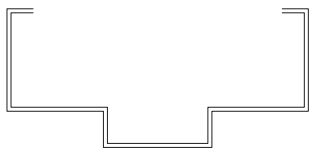
Master keying options are available for all NAFFCO lock cylinders.

HAND

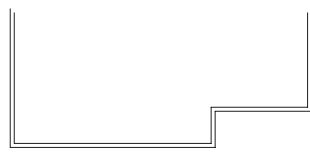
Non-Handed.



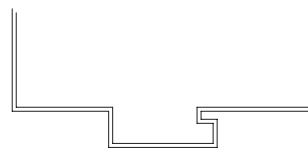
STANDARD STEEL FRAME PROFILES



DOUBLE RABBET



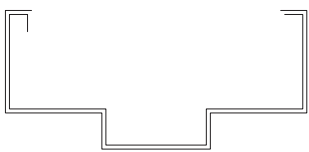
SINGLE RABBET



DOUBLE RABBET - KERF



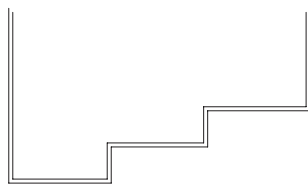
SINGLE RABBET - KERF



DOUBLE RABBET
WRAPAROUND



SINGLE RABBET
WRAPAROUND

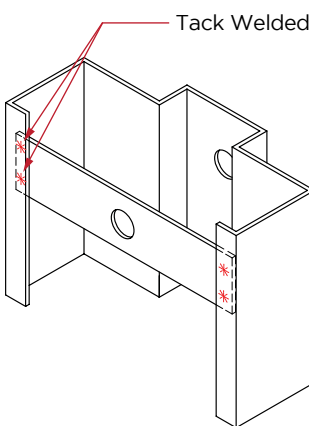


DOUBLE EGRESS

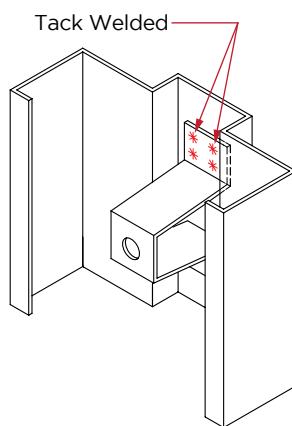


CASED OPENING

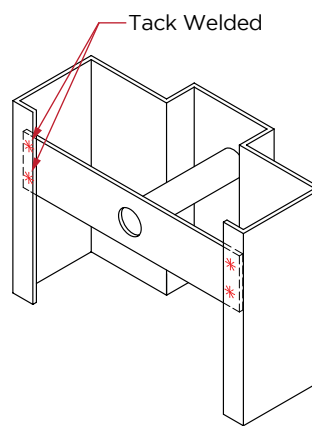
STANDARD ANCHOR TYPES



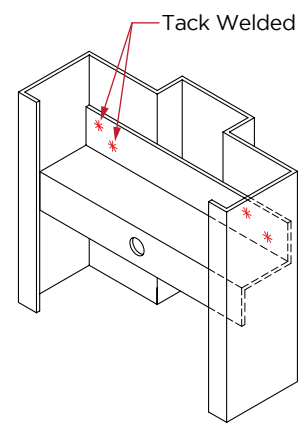
FLAT BAR ANCHOR



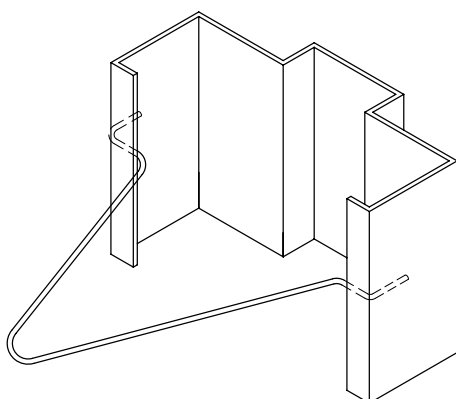
'U' ANCHOR



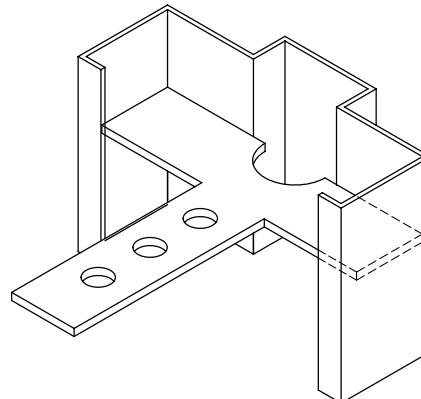
FLAT BAR WITH PIPE
ANCHOR



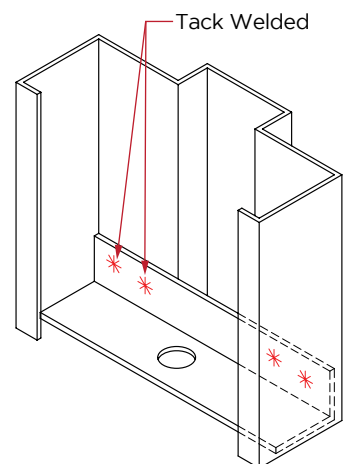
'Z' ANCHOR



WIRE ANCHOR



'T' ANCHOR



FLOOR ANCHOR

CERTIFICATE OF COMPLIANCE

Certificate Number: 20121031-R25075
Report Reference: R25075-20121031
Issue Date: 2012-OCTOBER-31

Issued to: NATIONAL FIRE FIGHTING MFG FZ CO
PO BOX 17014
JEBEL ALI FREE ZONE
DUBAI UNITED ARAB EMIRATES

This is to certify that representative samples of SWINGING-TYPE FIRE DOORS, POSITIVE-PRESSURE TESTED
A single and a pair of Swinging-type fire door assembly of the hollow metal type with honeycomb construction, intended for 2h (where applicable), 1-1/2h, 1h and 3/4h locations for use in masonry constructions.

Have been investigated by UL in accordance with the Standard(s) indicated on this Certificate.

Standard(s) for Safety: ANSI/UL 10C, Positive Pressure Fire Tests of Door Assemblies
Additional Information: See the UL Online Certifications Directory at www.ul.com/certdirectory for additional information

Only those products bearing the UL Classification Mark should be considered as being covered by UL's Classification and Follow-Up Service.

The UL Classification Mark includes: UL in a circle; with the word "CLASSIFIED" (as shown); a control number (may be alphanumeric) assigned by UL, a statement to indicate the extent of UL's evaluation of the product, and the product category name (product identity) as indicated in the appropriate UL Directory.

Look for the UL Classification Mark on the product.

James F. Grogan
James F. Grogan, Director, North American Certification Programs
UL
International and Domestic Certifications, 330 North LaSalle Street, Suite 300, Chicago, IL 60610-4400
Page 1 of 1

CERTIFICATE OF COMPLIANCE

Certificate Number: 20121031-R25075
Report Reference: R25075-20121031
Issue Date: 2012-OCTOBER-31

Issued to: NATIONAL FIRE FIGHTING MFG FZ CO
PO BOX 17014
JEBEL ALI FREE ZONE
DUBAI UNITED ARAB EMIRATES

This is to certify that representative samples of SWINGING-TYPE FIRE DOORS, POSITIVE-PRESSURE TESTED
A single and a pair of Swinging-type fire door assembly of the hollow metal type with honeycomb construction, intended for 2h (where applicable), 1-1/2h, 1h and 3/4h locations for use in masonry constructions.

Have been investigated by UL in accordance with the Standard(s) indicated on this Certificate.

Standard(s) for Safety: Positive Pressure Fire Tests of Door Assemblies, UL 10C
Additional Information: See the UL Online Certifications Directory at www.ul.com/certdirectory for additional information

Only those products bearing the UL Classification Mark should be considered as being covered by UL's Classification and Follow-Up Service.

The UL Classification Mark includes: UL in a circle; with the word "CLASSIFIED" (as shown); a control number (may be alphanumeric) assigned by UL, a statement to indicate the extent of UL's evaluation of the product, and the product category name (product identity) as indicated in the appropriate UL Directory.

Look for the UL Classification Mark on the product.

James F. Grogan
James F. Grogan, Director, North American Certification Programs
UL
International and Domestic Certifications, 330 North LaSalle Street, Suite 300, Chicago, IL 60610-4400
Page 1 of 1

BM TRADA

REGISTRATION CERTIFICATE

This is to certify

National Fire Fighting Manufacturing FZCO (NAFFCO)
P.O. Box 17014
Jebel Ali Free Zone
Dubai
United Arab Emirates

Meets the requirements of
The BM TRADA International Scheme for
Fire Doors BS 476 Part 22
Access: A Region 2

James F. Grogan
Signed on behalf of BM TRADA Certification Ltd
Paul Grogan, Group Director

BM TRADA

Registration Schedule

Establishment: National Fire Fighting Manufacturing FZCO (NAFFCO)
Address: P.O. Box 17014, Jebel Ali Free Zone, Dubai, United Arab Emirates

Scope

Registration	Owner of Registration Request	Element Description	Rating	Test Type
0000000001	NAFFCO Ltd	BS47622 - 100 - 100	Class 1	BS 476 Part 22
0000000002	NAFFCO Ltd	BS47622 - 100 - 100	Class 1	BS 476 Part 22
0000000003	NAFFCO Ltd	BS47622 - 100 - 100	Class 1	BS 476 Part 22
0000000004	NAFFCO Ltd	BS47622 - 100 - 100	Class 1	BS 476 Part 22
0000000005	NAFFCO Ltd	BS47622 - 100 - 100	Class 1	BS 476 Part 22
0000000006	NAFFCO Ltd	BS47622 - 100 - 100	Class 1	BS 476 Part 22
0000000007	NAFFCO Ltd	BS47622 - 100 - 100	Class 1	BS 476 Part 22
0000000008	NAFFCO Ltd	BS47622 - 100 - 100	Class 1	BS 476 Part 22
0000000009	NAFFCO Ltd	BS47622 - 100 - 100	Class 1	BS 476 Part 22
0000000010	NAFFCO Ltd	BS47622 - 100 - 100	Class 1	BS 476 Part 22
0000000011	NAFFCO Ltd	BS47622 - 100 - 100	Class 1	BS 476 Part 22
0000000012	NAFFCO Ltd	BS47622 - 100 - 100	Class 1	BS 476 Part 22
0000000013	NAFFCO Ltd	BS47622 - 100 - 100	Class 1	BS 476 Part 22
0000000014	NAFFCO Ltd	BS47622 - 100 - 100	Class 1	BS 476 Part 22
0000000015	NAFFCO Ltd	BS47622 - 100 - 100	Class 1	BS 476 Part 22
0000000016	NAFFCO Ltd	BS47622 - 100 - 100	Class 1	BS 476 Part 22
0000000017	NAFFCO Ltd	BS47622 - 100 - 100	Class 1	BS 476 Part 22
0000000018	NAFFCO Ltd	BS47622 - 100 - 100	Class 1	BS 476 Part 22
0000000019	NAFFCO Ltd	BS47622 - 100 - 100	Class 1	BS 476 Part 22
0000000020	NAFFCO Ltd	BS47622 - 100 - 100	Class 1	BS 476 Part 22

For detailed conditions refer to the Scope of Certification document

Certificate of Membership

2010-11

NAFFCO

is a member in good standing and is entitled to the benefits and privileges of membership.

James F. Grogan
Group Director

David S. Higgins
David S. Higgins, Sr. CMO
Chief Executive Officer

dhi Door and Hardware Institute



Serving Over 100 Countries Worldwide



NAFFCO FZCO
World Headquarters
Dubai, United Arab Emirates
Email: info@naffco.com
www.naffco.com

In line with NAFFCO policy for continuous product development,
NAFFCO has the right to change specifications without prior notice.

AXIS SAFETY ENGINEERING LTD.

CAT.NO.NF/FRED/01/15